



Connection Community Columbia

VANTAGEPOINTRESIDENCES.ORG





Thank you for your interest in Residences at Vantage Point.

We know there are many factors to consider when choosing a retirement living community. Residents will tell you one of the reasons why so many choose Vantage Point is that the community offers an engaging lifestyle, opportunities to pursue personal interests and remain connected to the things you love, more fun, more accessibility, more value, and more security!

When we say, *"Invest in a way of life and a plan for a future that provides you with tangible returns and benefits everyday"*, we are talking about more than just an active, upbeat lifestyle. We are also talking about the real financial advantage of our community. Across the board, Vantage Point offers you an enhanced lifestyle at a more predictable cost. Here are just a few examples:

Holistic wellness ... with our "Circles of Wellness" program--- Designed Around You!

More Urban Conveniences ... Columbia Is Our Campus!

More Accessible ... just the right size

More Value Choice of CCRC contracts

Designed around your financial expectations, Vantage Point offers you a choice of Continuing Care Retirement Community (CCRC) contracts.

✓ ***Life Care Contract***

✓ ***Fee- for- Service Contract***

More Secure ... giving you peace of mind for the future

The following information is designed to give you a taste of all the opportunities Vantage Point has to offer. We look forward to hearing from you!

vantagepointresidences.org | (800)-998-2682
5400 Vantage Point Road, Columbia, MD 21044

Connection • Community • Columbia



Managed by Life Care Services™



FACTS ABOUT THE COMMUNITY

SITE: Located in the Town Center of Columbia, Maryland with convenient access to restaurants, cultural activities, shopping, places of worship, physicians' offices, and hospitals, walking paths, lakes and parks.

COMMUNITY: Residences at Vantage Point opened in October 1990. There are 203 Independent Living Apartments: modern studio, one-bedroom, two-bedroom and penthouse residences available in fourteen different floor plans. On-site 5-Star rated Medicare Certified Health Center available with 26 private assisted living residences, 24 private memory care residences and 44 private and semi-private comprehensive nursing care accommodations for rehabilitation and long-term nursing care.

FACTS ABOUT THE CORPORATION

OWNER: Columbia Vantage House Corporation, Columbia, Maryland. A not-for-profit corporation overseen by an independent Board of Directors made up of local community leaders and two Vantage Point residents. Operated entirely as a not-for-profit retirement community with the best interests of the residents in mind.

MANAGEMENT: Life Care Services LLC (LCS), Des Moines, Iowa. LCS has been involved in the development or management of more than 130 senior living communities throughout the United States for over four decades with a record of success unmatched in the industry.

FACTS ABOUT THE PROGRAM

Residences at Vantage Point is the only not-for-profit Continuing Care Retirement Community or Life Plan Community in Howard County that provides seniors an enriching active lifestyle offering the choice between a Life Care Agreement or a Fee-For-Service Agreement.

LIFE CARE AGREEMENT:

Ideal for those who like a predictable financial plan which includes a package of services and amenities with future short- and long-term care included at predictable, below market costs.

FEE FOR SERVICE AGREEMENT:

Ideal for those who have planned to pay for future health services through Long Term Care Insurance, while still enjoying all the benefits of our community lifestyle.

FINANCIAL OPTIONS FOR RETURN OF ENTRANCE FEE:

Both the Life Care and Fee for Service Agreements offer either a 90% Refund Plan or the 50 Month Declining Refund Plan.

QUALIFICATIONS:

(a) 60 years of age or older; (b) capable of independent living with reasonable modifications or accommodations; and (c) financially qualified



THE ABC'S OF EVALUATING YOUR SENIOR LIVING OPTIONS

As you research your senior living options --- who offers what, the terms, the benefits, the actual costs-- you are probably left with many questions. Let us help you sort out the *ABC's of Life Plan/Continuing Care Retirement Community Residency Agreements*.

Moving to a Life Plan or Continuing Care Retirement Community (CCRC) also called a Life Plan Community, offers an unsurpassed quality of life which often enhances one's independence. You may enjoy the privacy of your own apartment, while becoming involved in a wide array of Educational, Cultural, Fitness, and Spiritual Programs. Health Care is available within the community, but *how you pay* for your future health care becomes the basis of comparison of CCRC's.

As you are reviewing the Residency Agreements, the services offered are typically the same in the residential Independent Living apartment - providing a dining program, utilities, weekly housekeeping, maintenance, planned social activities and scheduled transportation.

However, the differences occur in how you pay for the HEALTH CARE component of the CCRC contract. What are the actual lifetime costs of Assisted Living or Nursing Care?

THERE ARE THREE BASIC TYPES OF CCRC CONTRACTS

TYPE A – EXTENSIVE OR LIFE CARE AGREEMENT

- Fees include residential housing along with services and amenities package.
- Fees includes unlimited, on-site Assisted Living and Health Care with virtually no increase in the Monthly Fee - no matter the length of time you may need the health care.
- *Vantage Point offers the Type A - Life Care Agreement with our Life Care Ad Vantage™*

TYPE B – MODIFIED AGREEMENT

- Fees include residential housing along with services and amenities package.
- Fees include a specified amount of Nursing Care at a reduced rate (usually 30 - 60 days for the life of the contract.) After this specified amount of care is used, the resident must pay the market daily rate for Assisted Living and Nursing Care.

TYPE C – FEE-FOR-SERVICE AGREEMENT

- Fees include residential housing along with services and amenities package.
- Short-and long-term Assisted Living and Nursing Care services are charged at the market daily rate to the resident.
- The cost for Assisted Living may typically average \$6,500 + per month depending on level of care. The cost for Nursing Care may typically average \$8,800+ per month depending on level of care.
- *Vantage Point also offers the Type C - Fee-For-Service Agreement.*

COMPARE THE VALUE OF THE VANTAGE POINT LIFE CARE OR FEE-FOR-SERVICE AGREEMENTS

<i>COMPARE THE VALUE</i>	<i>VANTAGE POINT</i>			
Is the CCRC a <u>Not-For-Profit</u> Senior Living Community governed by a local community-based Board of Directors?	Yes			
Has the CCRC operated with financial stability for over 29 years while maintaining a satisfied resident population?	Yes			
Are there residents and resident family members on the Board of Directors?	Yes			
Is the CCRC managed by Life Care Services with over 45 years of experience managing over 130 Senior Living Communities providing housing to over 35,000 seniors in 38 states?	Yes			
Does the CCRC offer a choice of Life Care or the Fee-for-Service Agreements?	Yes			
Does the CCRC offer a choice of Entrance Fee plans with the option of either a 90% Refundable or a Declining Refund Entrance Fee?	Yes			
Is the refundable portion of the Entrance Fee totally refundable? <i>(Some CCRCs say their Entrance Fee is refundable, but refurbishment of your apartment or payment for your assisted living or nursing care, may be deducted, leaving very little or nothing of your refundable Entrance Fee.)</i>	Yes			
Does the CCRC offer the Life Care Ad <i>Vantage</i> ™ where the Monthly Fee includes unlimited assisted living and nursing care for virtually the same Monthly Fee as your apartment plus the cost of two additional meals and medical supplies?	Yes Life Care only			
Does the Health Center of the CCRC continue to achieve a <i>Five-Star Quality Rating</i> by the Centers for Medicare Services (CMS)	Yes			

<i>COMPARE THE VALUE</i>	<i>VANTAGE POINT</i>			
Is there a Medicare Certified Wellness Center with a Registered Nurse available on-site for illnesses or routine checkups?	Yes			
Are the scheduled services of a Physician, Dentist, Podiatrist, Massage Therapist and Audiologist, available in the on-site Wellness Center?	Yes			
Is a portion of the Entrance Fee tax deductible since it is used in part to pay for your future long-term health care? (<i>Vantage Point's most recent tax-deductible amount was 36.55%.</i>)	Yes Life Care only			
Are Home Health services available if you require some assistance in your apartment?	Yes			
Is the closest hospital owned and part of the Johns Hopkins Medical Community? (Howard County General Hospital)	Yes			
Does the Monthly Fee include an on-site Fitness Center with a certified fitness trainer?	Yes			
Does the Monthly Fee include an assigned parking space for your car?	Yes			
Is assigned covered parking available for a nominal charge?	Yes			
Does the Monthly Fee include a flexible dining program with multiple options such as a Bistro, Fire Side Dining room or a less formal Pub; even options for take-out or meal delivery to your apartment?	Yes			
Does the Monthly Fee include <i>The Circles of Wellness Program</i> designed around <i>your</i> expectations for achieving balance in all aspects of your life?	Yes			

<i>COMPARE THE VALUE</i>	<i>VANTAGE POINT</i>			
Do most apartments include a balcony with spectacular views of the Columbia Town Center area?	Yes			
Does the Monthly Fee include wireless internet access in the apartment and throughout the community?	Yes			
Is the CCRC centrally located with all the advantages of <i>Town Center Living</i> ; close to great shopping, award winning theatres, diverse entertainment, and convenient transportation?	Yes			
Is there a wide range of organized trips to the symphony, theatrical plays, museums, art galleries, or baseball games?	Yes			
Does the Monthly Fee include scheduled transportation within the Columbia community to the mall, grocery stores, library, and other appointments?	Yes			
Is there assistance to help stage your current home and organize your move?	Yes			
Is there up to 2 hours of complimentary personal assistance to hang and install items in your new home?	Yes			
Does the Monthly Fee include a Life Long Learning Program offering new opportunities for personal growth?	Yes			
Will <i>you</i> have the immeasurable benefit of <i>peace of mind</i> for yourself and your family--- with more predictable costs for the future, instead of having to save for all the “what ifs” that may occur?	Yes			



RESIDENCES AT VANTAGE POINT



CIRCLES OF WELLNESS DESIGNED AROUND YOU

AdVantage Lifestyle™
Achieving Balance



VOCATIONAL

“Involvement, Contribution, Sense of Purpose”

- Satisfaction and meaningful contribution
- Being part of a bigger team
- Having a place to go and contribute
- Continuing to work/fewer household encumbrances
- Volunteering for a useful cause
- Ability to make use of one's talents/ Giving back
- Personal enrichment/ Learning new skills
- Sense of purpose & happiness in life
- Gardening Club
- Knit One - Crochet Too!
- Volunteering in the community
- Volunteering for Resident Committees
- League of Women Voters
- PEO (Philanthropic Educational Organization)
- Rotary Club
- Hospice Volunteer
- Practical Studies Educational Site
 - for college students in nursing, social work, and nurse practitioners from Howard Community College and University of Maryland Baltimore Campus



SOCIAL

“Engagement, Communication, Cooperation”

- Engaging with family and friends
 - Laughter and sharing good times
 - Feeling connected
 - Experience a diverse and culturally rich environment
 - Opportunity to engage in group activities
 - Reduce isolation
 - Design of building promotes informal gatherings
 - Opportunities to travel with others
 - Off-site activities are only a short distance away in the Columbia area
 - Cultural activities and trips to Baltimore-Washington corridor & surrounding areas around the DMV (Washington DC, Maryland and Virginia)
 - Cards & Games (Bridge, Mahjong, Scrabble, Billiards, Wii Sports, Poker, Rummikub, etc.)
 - Happy Hour Socials
 - Dine with friends and neighbors
 - A variety of musical entertainment
 - Shopping trips
 - Special Events and Celebrations
 - Resident Directed Social and Cultural Committees
-



ENVIRONMENTAL

“Sustainability: Social Awareness for Wise Use of Resources”

- Recycling Program
 - Resident gardens for growing flowers and vegetables
 - Electric vehicle charging station
 - Energy Conservation – use of energy efficient lighting, heating/cooling and appliances throughout community
 - Respect/responsibility for natural resources
 - Carpooling
 - Low VOC paints used throughout
 - Cabinetry installed is Green Certified
 - Carpet in apartments is composed of recycled nylon fiber
 - Green Cleaning products
 - Compact fluorescent light bulbs
 - Use of technology vs. printing
 - Sidwell Garden Grounds and Garden Committee
 - Eco-friendly Re-usable take-out containers
-



SPIRITUAL

“Belief, Fellowship, Respect, Diversity”

- Non-denominational community welcoming to all faiths
- Catholic Communion Services
- Protestant Worship Service
- Shabbat Services
- Bible Study
- Sharing Traditions



EMOTIONAL

“Self Balance, Adaptability, Resilience, Attitude”

- Find your own level of contentment
- Caring and support of one another
- Honest communication
- Redefining opportunities/Having new experiences
- Acceptance of who you are
- Support and adapt to change
- Among others with similar life experiences
- Positive sense of self
- Resident Hospitality Program
- Purpose beyond self
- Support Groups
- Family Council
- Strengthen connections with others
- Strong sense of community
- Family relationships



PHYSICAL

“Mobility, Activity, Exercise, Diet”

- Strength, mobility and the ability to perform activities
 - Physical fitness
 - Staying active
 - Daily exercise classes
 - Eating a healthy diet
 - Walking every day
 - Routine sleep patterns
 - Certified trainer included in monthly fee
 - Executive Chef on staff
 - Fitness Center open 24-hours
 - Classes for strength training, balance, and muscle toning
 - Tai Chi, Yoga
 - Miles of walking and biking paths
 - Walking & hiking groups
 - Pickleball
 - Zumba, Tapdance, International Folk Dance
 - Rock Steady Boxing
-



INTELLECTUAL

“Alertness, Learn New Things, Current Affairs”

- Lifelong learning
- Opportunity to pursue your own interests
- Creative thinking and learning new things
- Involvement – working toward similar goals with others
- Exchange of new ideas
- Engage in technology
- Book Discussion Groups
- Variety of Lectures and Seminars
- Photography club
- Audit Classes at Howard Community College
- Courses at OSHER Lifelong Learning Institute at Johns Hopkins University
- Great Decisions Resident Speaker Series
- Artists Guild for Creative Arts
- Documentaries, Classic and Contemporary Movies in Movie Theater



HEALTH SERVICES

“Wellness Navigation”

- Wellness Center with Physician/ Nurse Practitioner
- Medical Updates with Medical Director Andy Lazris, MD
- Health Information and Fitness presentations
- Dermatologist, Audiologists, Podiatrist, Massage Therapy onsite visits
- Availability of on-site Rehab with Physical, Occupational and Speech Therapy
- Healthy lifestyle and dining options
- Medical Alert/Vial of Life
- Howard County General Hospital owned by Johns Hopkins Howard County Medical Center
- On-Site Continuum of care including Assisted Living, Memory Support and Comprehensive Nursing Care

A SAMPLE OF OFF-SITE TRIPS

- Baltimore Symphony Orchestra Performances
- Candlelight Concert Society Subscription Series
- Columbia Pro Cantare
- National Gallery of Art
- Ford's Theatre
- Howard Community College Concerts & Performances
- Olney Dinner Theatre Performances
- Transportation for shopping and personal appointments
- Smithsonian Museum of Natural History
- Kennedy Center
- United States Holocaust Museum
- Walters Art Museum
- Merriweather Post Pavilion
- Strathmore Theatre
- Senior Entertainment & Arts Metropolitan Opera Simulcast
- Arena Stage
- The Columbia Orchestra
- Sundays at Three

vantagepointresidences.org | 410.992.1241
5400 Vantage Point Road, Columbia, MD 21044

Connection • Community • Columbia



pet
friendly

Managed by Life Care Services™



VANTAGEPOINTS™

Lifestyle Conveniences *(Included in Monthly Fee)*

- Declining balance dining program
 - All utilities including local telephone
 - Basic cable tv service
 - Wireless internet
 - Personalized weekly housekeeping
 - Weekly flat linen service
 - Local transportation
 - Scheduled shopping trips
 - Assigned open air parking
 - No cost self-service laundry (on each floor)
 - 24-hour emergency response system
 - 24-hour Security
 - Full-time Activity Coordinator
 - Executive Chef
 - Certified Fitness Trainer
-

Neighborhood Conveniences

- Pub, Bistro, Marketplace Café, Fireside dining
- Outdoor terrace
- Auditorium with sound and video system
- Library with over 3,000 volumes
- Movie theater
- Wintergarden
- Reading Room with fireplace
- Meeting rooms
- Card & Game Room with Billiards table
- Creative arts studio
- Fitness Center with certified trainer
- Beauty & Barber Salon
- Convenience store
- Guest rooms
- Private, in-house storage areas
- Visitor Parking
- Electric Car Charging Station

Life Care AdVantage™
(Included in Monthly Fee)

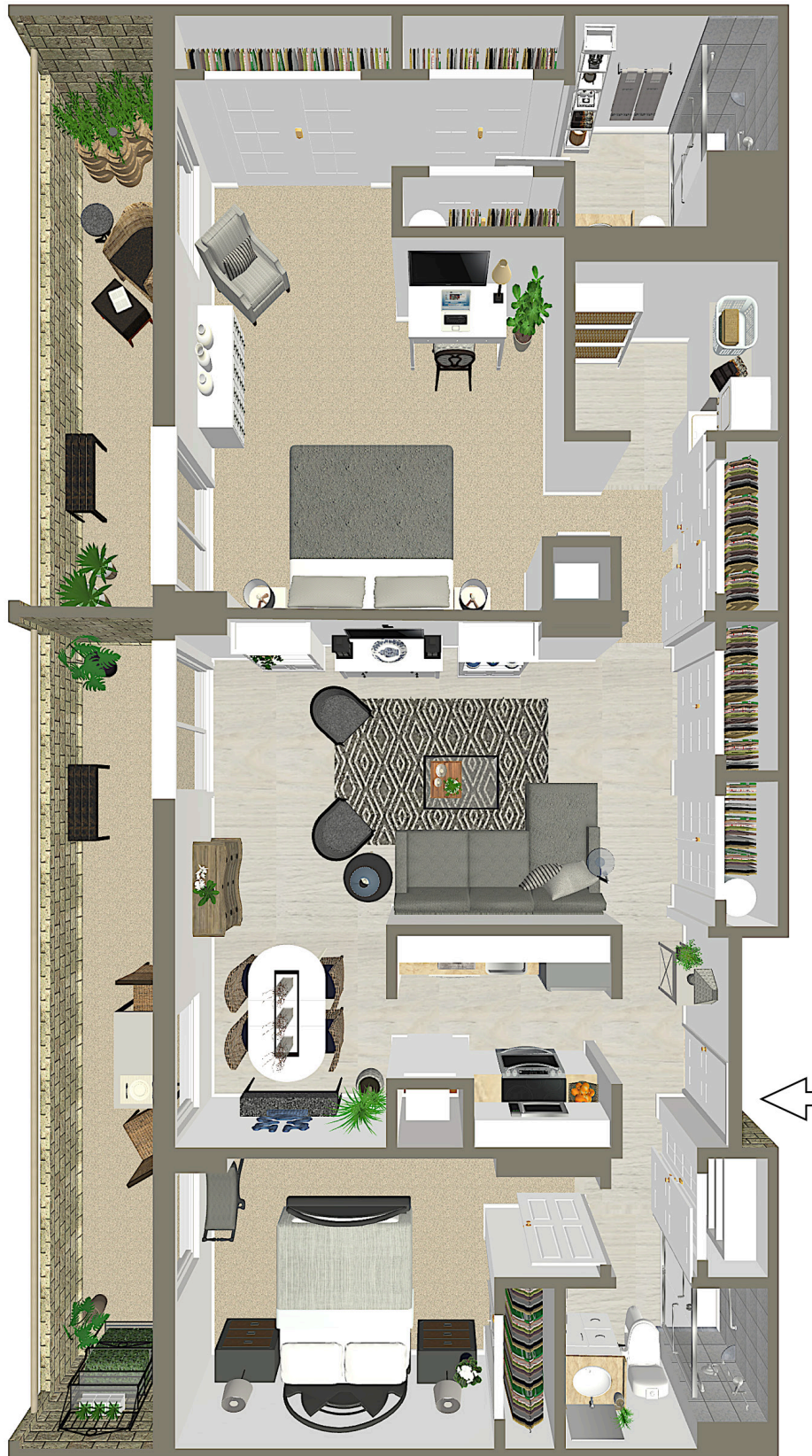
- Cedar Place - Medicare certified nursing care neighborhood
- Aspen Place - Assisted Living neighborhood
- Monterey Place - Assisted Living with Memory Support neighborhood
- On-Site Recuperative and Rehabilitative Care

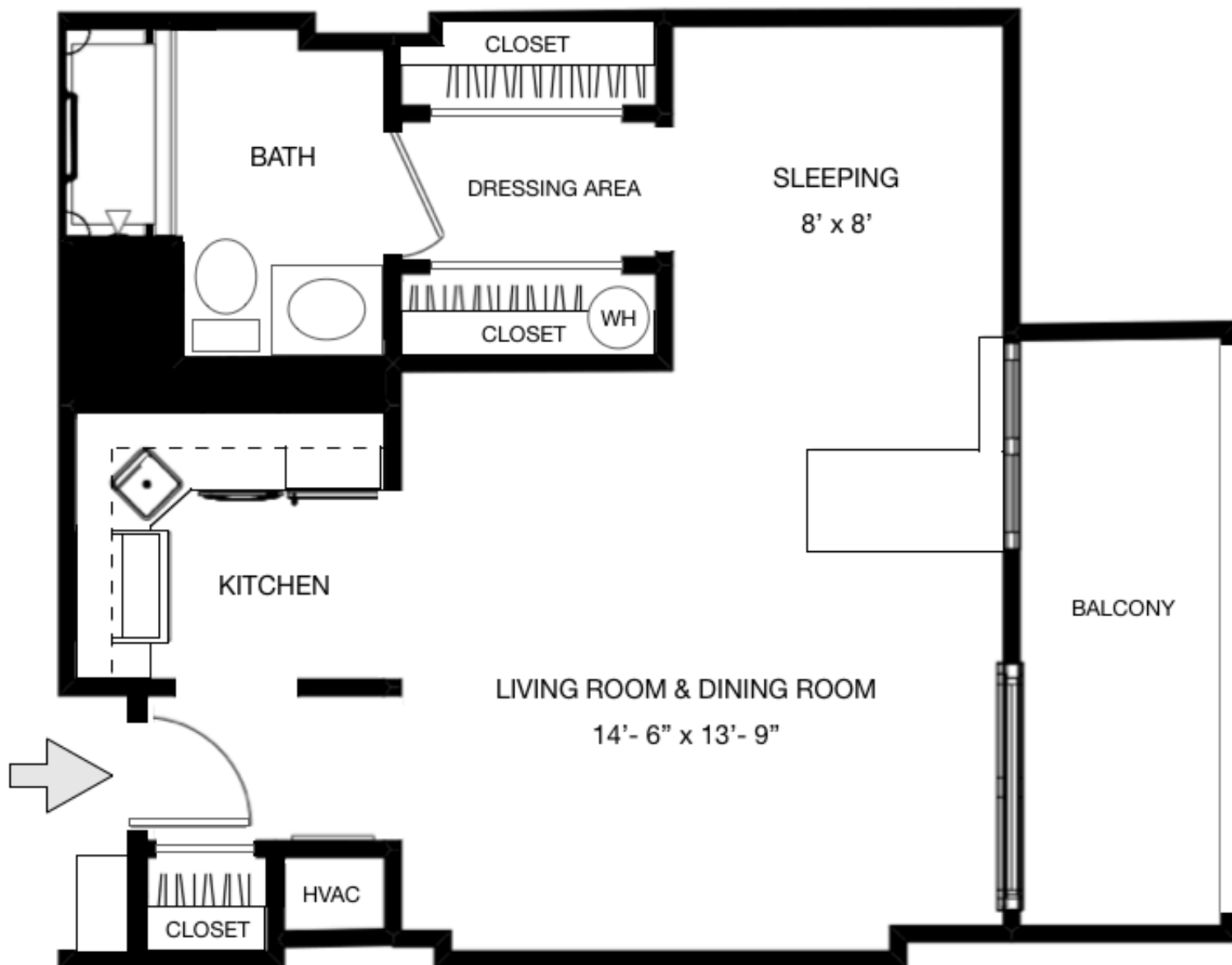
Living Well Opportunities

- Wellness Center w/Nurse Practitioner
- Private Physician's Care
- Full-time Social Work services
- Physical Therapy
- Occupational Therapy
- Speech Therapy
- Massage Therapy
- Dental services
- Podiatry services
- Audiology services
- Dermatology Services
- Dietary consultations
- Personal Service Providers

Apartment Features

- Contemporary cabinetry
- Quartz countertops
- Wall-to-wall carpeting and vinyl plank flooring
- Window treatments
- Closet organizer system in bedrooms
- Sprinkler/fire prevention system
- Individually controlled heat/air conditioning
- Oven and range
- Over-the-range microwave
- Refrigerator with icemaker
- Garbage disposal
- Dishwasher
- Washer and dryer
- Trash and recycle bins (on each floor)
- Safety features in bathroom
- Most apartments with balconies







Senator / One Bedroom / 560 sq. ft.

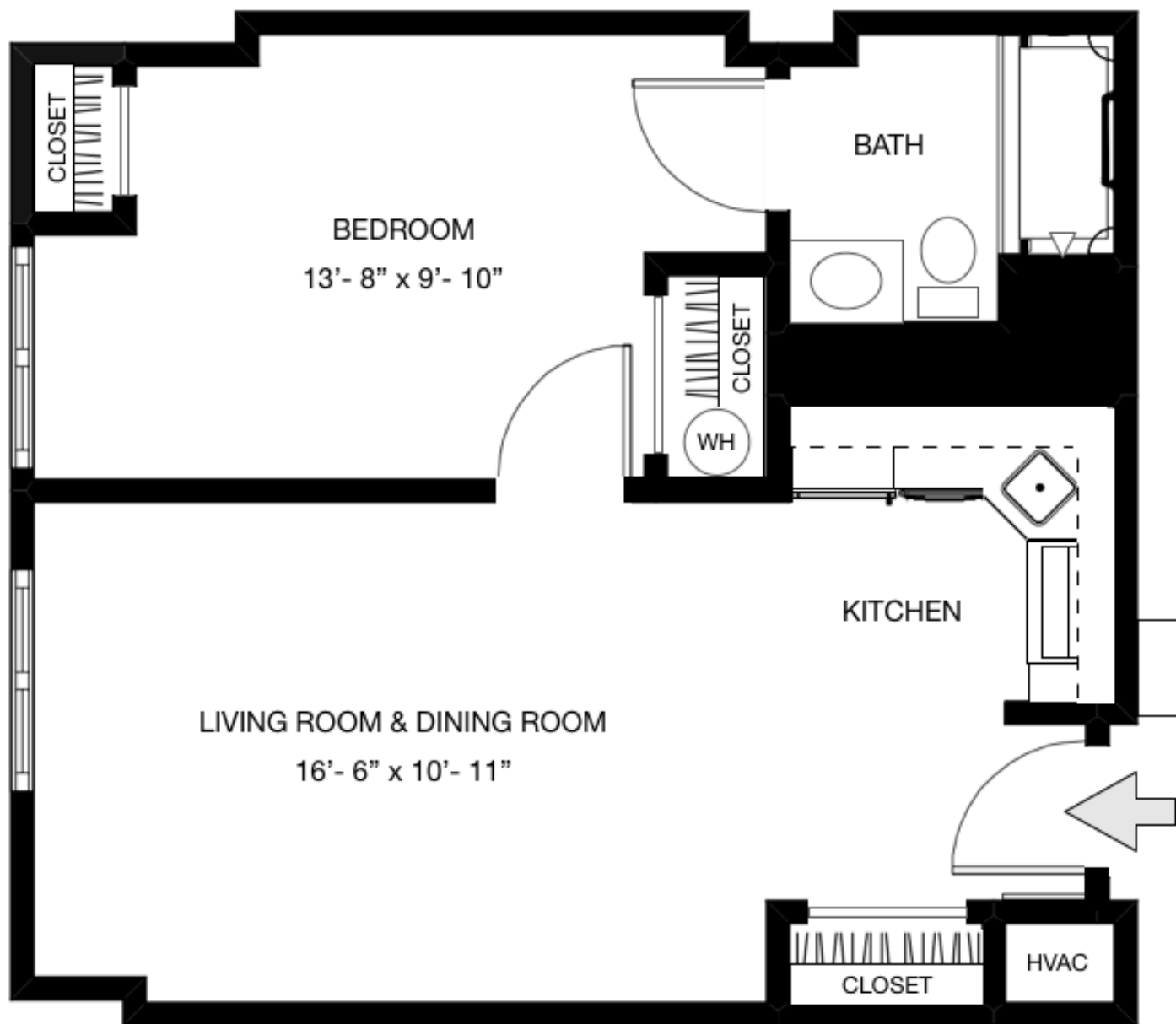
Scale and Dimensions are approximate and may vary slightly due to apartment location.



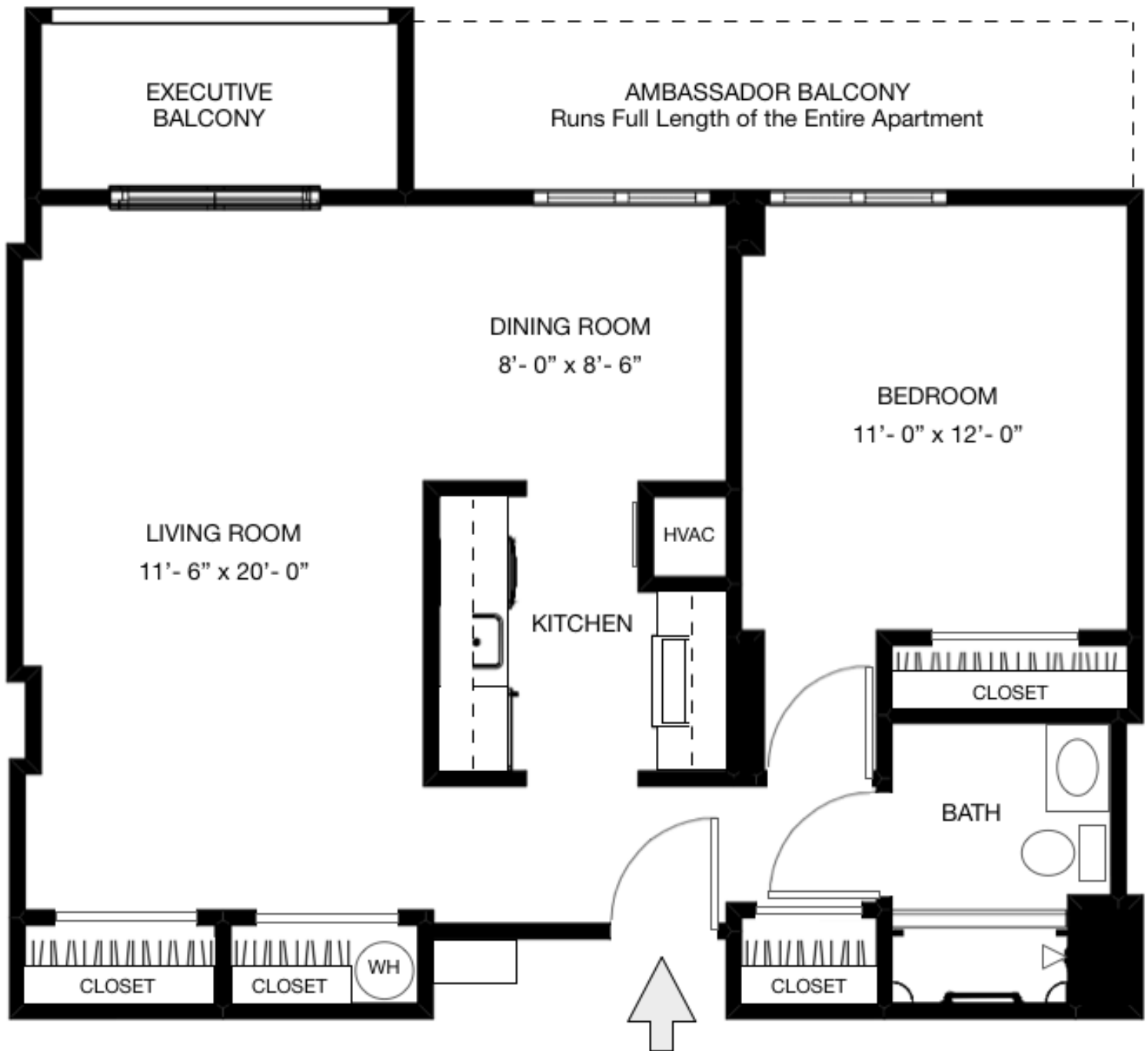
pet
friendly

Managed by  Life Care Services®















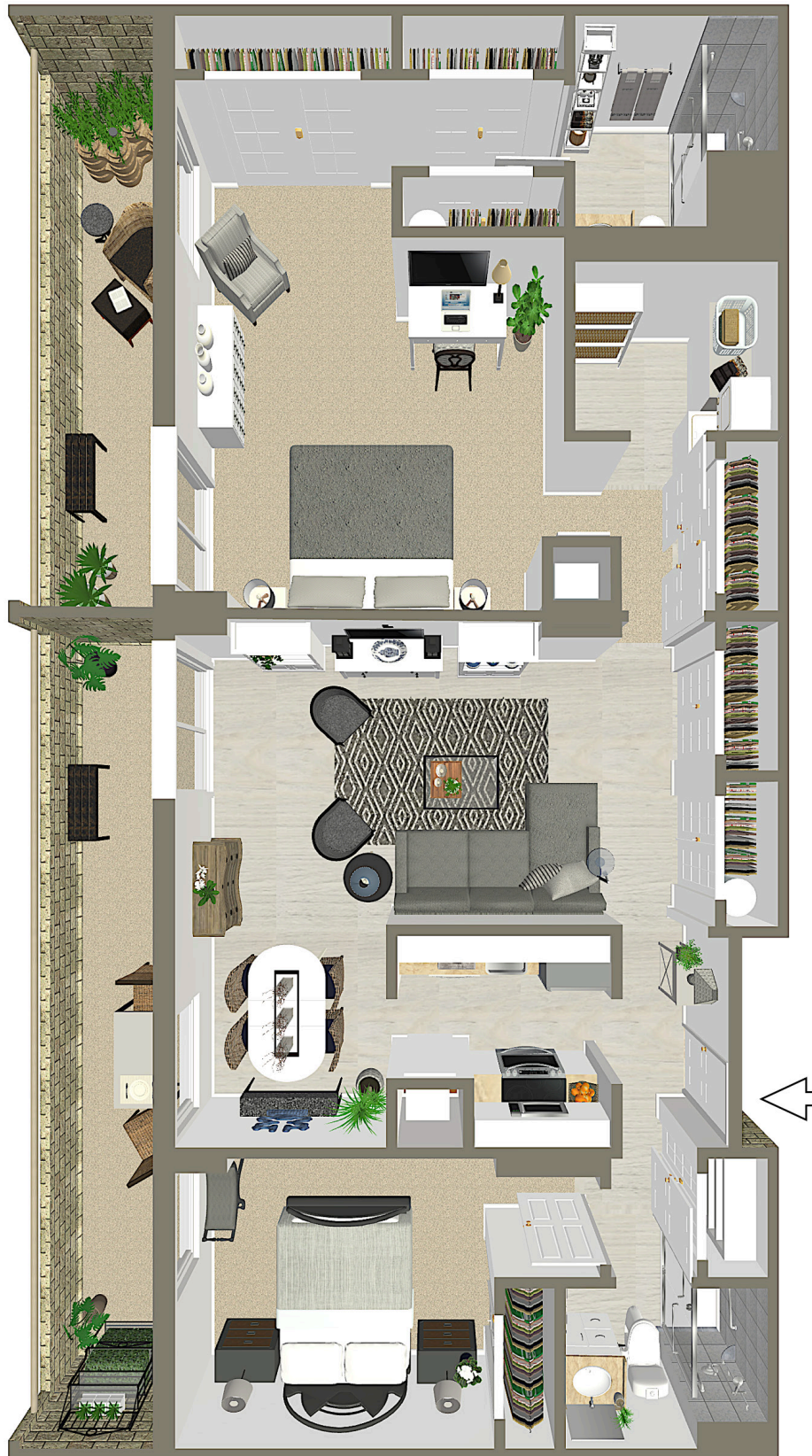
Scale and Dimensions are approximate and may vary slightly due to apartment location.

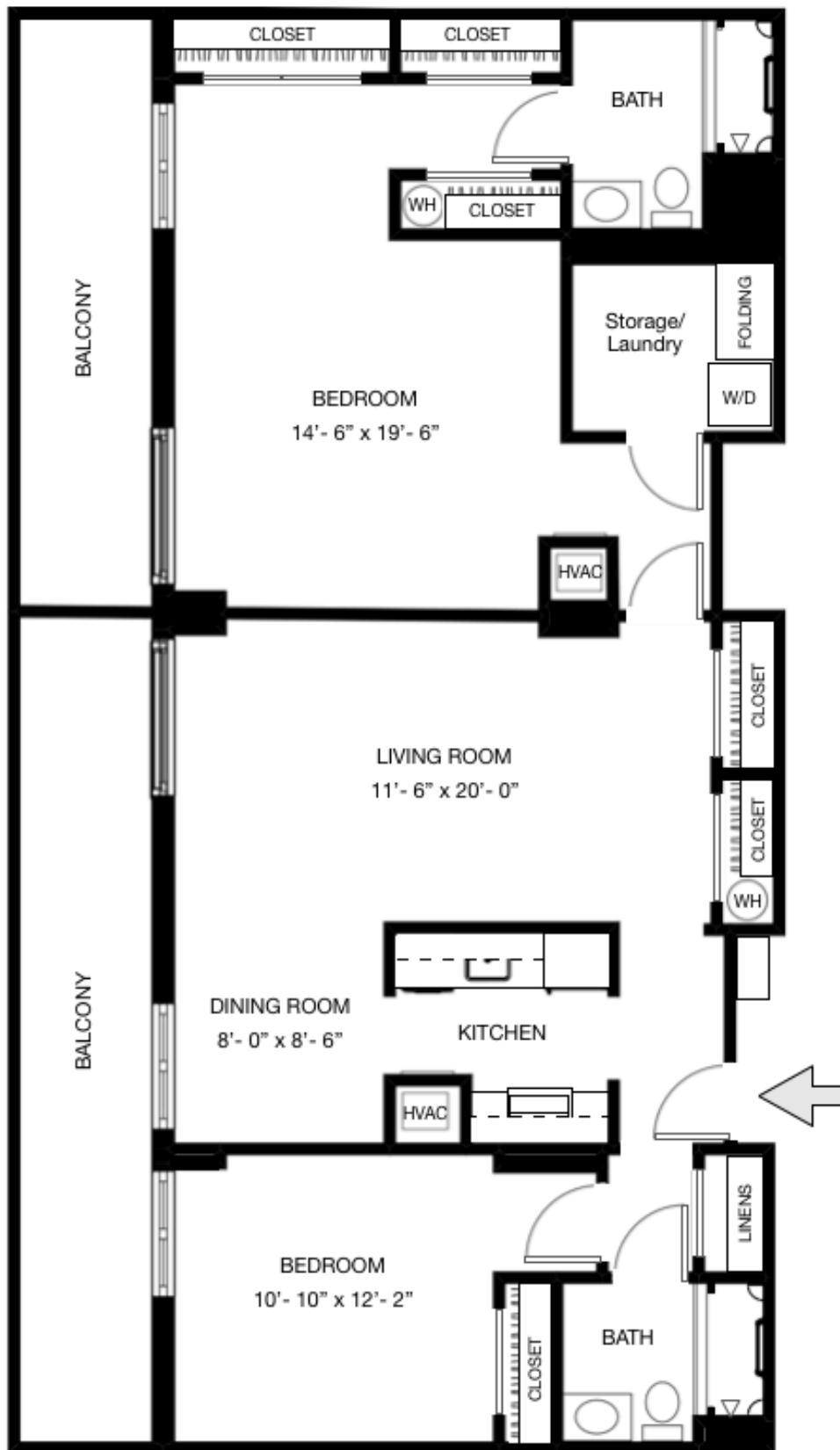




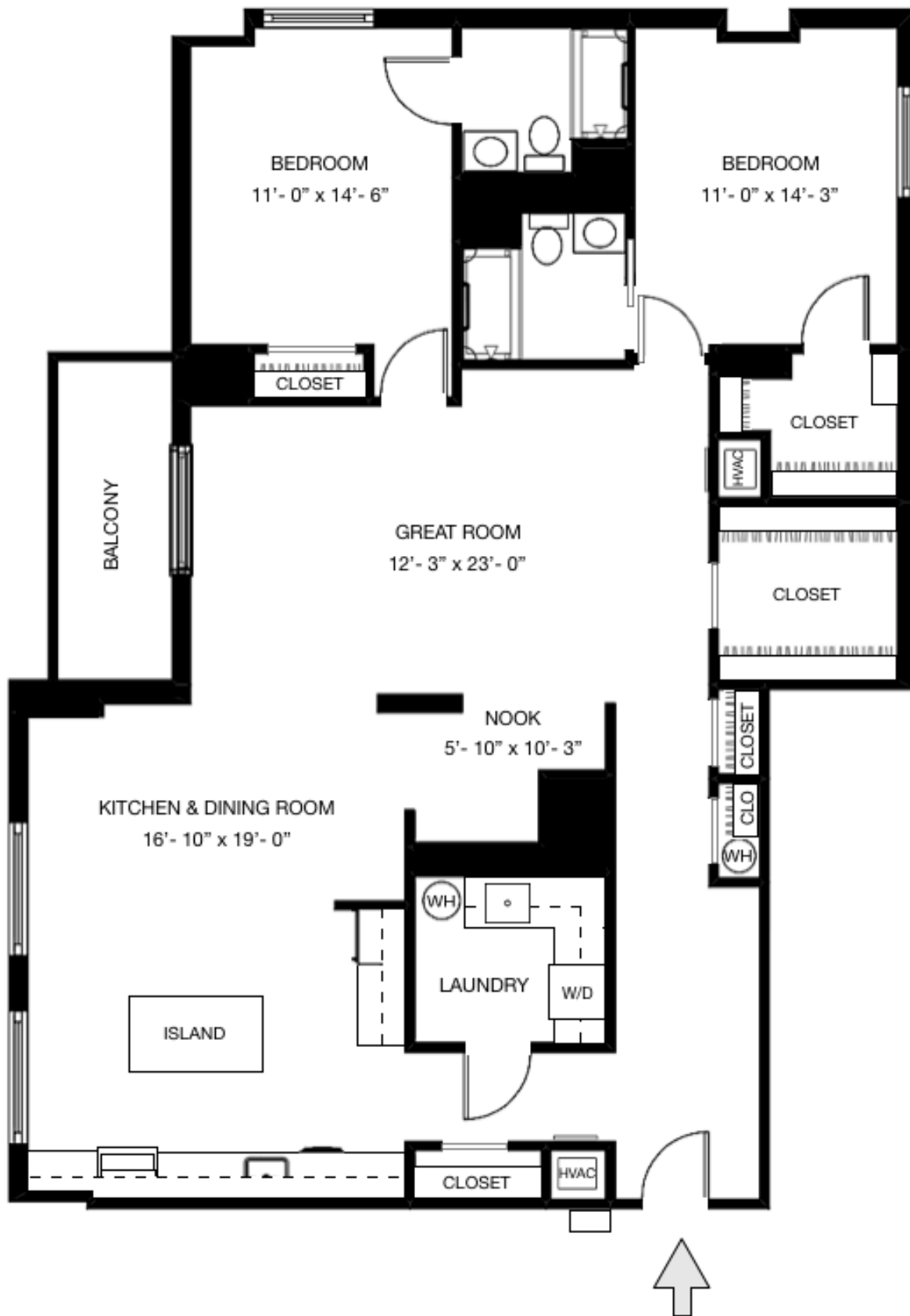












SCHEDULE OF FEES

TYPE A: LIFE CARE | EFFECTIVE JULY 1, 2025



ENTRANCE FEES

MONTHLY FEES

Apartment Type	Sq. Ft.	Entrance Fee 80% Refundable	Entrance Fee 50% Refundable	Entrance Fee 50 Month Declining	Monthly Fee First Person	Monthly Fee Two People
Somerset (Studio)	560	\$250,660 - \$270,660	\$201,764 - \$221,764	\$152,867 - \$172,867	\$4,252	\$6,776
Senator (One BR)	560	\$250,660 - \$263,160	\$201,764 - \$214,264	\$152,867 - \$165,367	\$4,252	\$6,776
Ambassador (One BR DLX)	756	\$392,310 - \$412,310	\$318,084 - \$338,084	\$238,428 - \$258,428	\$5,322	\$7,846
Executive (One BR DLX)	756	\$377,310 - \$397,310	\$303,084 - \$323,084	\$223,428 - \$243,428	\$5,322	\$7,846
Executive Plus (One BR DLX)	796	\$392,310 - \$404,810	\$318,084 - \$330,584	\$238,428 - \$250,928	\$5,322	\$7,846
Coronet (Two BR)	1000	\$582,811 - \$595,311	\$467,507 - \$480,007	\$352,206 - \$364,706	\$7,087	\$9,611
Regency (Two BR)	1002	\$579,832 - \$594,832	\$465,126 - \$480,126	\$350,419 - \$365,419	\$6,728	\$9,252
Windsor (Two BR)	1032	\$577,180 - \$597,180	\$463,004 - \$483,004	\$348,828 - \$368,828	\$6,728	\$9,252
Windsor Plus (Two BR)	1072	\$592,180 - \$604,680	\$478,004 - \$490,504	\$363,828 - \$376,328	\$6,728	\$9,252
Sussex (Two BR)	1316	\$723,704 - \$736,204	\$580,224 - \$592,724	\$436,742 - \$449,242	\$7,975	\$10,499
Buckingham (Two BR DLX)	1620	\$879,274 - \$891,774	\$704,679 - \$717,179	\$530,084 - \$542,584	\$9,252	\$11,776

This is a sample of apartment styles. For additional floor plan options, please ask your Lifestyle Advisor or call us at 410-992-1241.
Entrance fees vary due to location and/or unique features.

Second Person Fee for AL, Memory Support or Nursing Care
(calculated using the weighted average Type A first person monthly fee)\$5,911
Additional Entrance Fee for Second Person:.....\$28,800
Additional Monthly Fee for Second Person:\$2,524
Portion of Entrance Fee designated for Capital Reserves:.....\$6,000

Connection • Community • Columbia

vantagepointresidences.org | (410) 992-1241
5400 Vantage Point Road, Columbia, MD 21044



Managed by Life Care Services™



SCHEDULE OF FEES

TYPE C: FEE-FOR-SERVICE | EFFECTIVE JULY 1, 2025



ENTRANCE FEES

MONTHLY FEES

Apartment Type	Sq. Ft.	Entrance Fee 80% Refundable	Entrance Fee 50% Refundable	Entrance Fee 50 Month Declining	Monthly Fee First Person	Monthly Fee Two People
Somerset (Studio)	560	\$220,176 - \$240,176	\$177,376 - \$197,376	\$134,577 - \$154,577	\$3,249	\$5,094
Senator (One BR)	560	\$220,176 - \$232,676	\$177,376 - \$189,876	\$134,577 - \$147,077	\$3,249	\$5,094
Ambassador (One BR DLX)	756	\$355,317 - \$375,317	\$288,490 - \$308,490	\$216,773 - \$236,773	\$4,060	\$5,905
Executive (One BR/DLX)	756	\$340,317 - \$360,317	\$273,490 - \$293,490	\$201,773 - \$221,773	\$4,060	\$5,905
Executive Plus (One BR/DLX)	796	\$355,317 - \$367,817	\$288,490 - \$300,990	\$216,773 - \$229,273	\$4,060	\$5,905
Coronet (Two BR)	1000	\$540,434 - \$552,934	\$433,608 - \$446,108	\$326,780 - \$339,280	\$5,404	\$7,249
Regency (Two BR)	1002	\$537,541 - \$552,541	\$431,293 - \$446,293	\$325,044 - \$340,044	\$5,130	\$6,975
Windsor (Two BR)	1032	\$534,966 - \$554,966	\$429,233 - \$449,233	\$323,499 - \$343,499	\$5,130	\$6,975
Windsor Plus (Two BR)	1072	\$549,966 - \$562,466	\$444,233 - \$456,733	\$338,499 - \$350,999	\$5,130	\$6,975
Sussex (Two BR)	1316	\$677,303 - \$689,803	\$543,103 - \$555,603	\$408,903 - \$421,403	\$6,077	\$7,922
Buckingham (Two BR DLX)	1620	\$828,428 - \$840,928	\$664,002 - \$676,502	\$499,576 - \$512,076	\$6,978	\$8,823

This is a sample of apartment styles. For additional floor plan options, please ask your Lifestyle Advisor or call us at 410-992-1241.
Entrance fees vary due to location and/or unique features.

Additional Entrance Fee for Second Person:.....	\$23,045	Assisted Living Starting at	\$229/day
Additional Monthly Fee for Fee for Two People:	\$1,845	Memory Support program.....	\$297/day
Portion of Entrance Fee designated for Capital Reserves:.....	\$6,000	Comprehensive Nursing Care Semi-private.....	\$413/day
		Comprehensive Nursing Care Private room.....	\$480/day

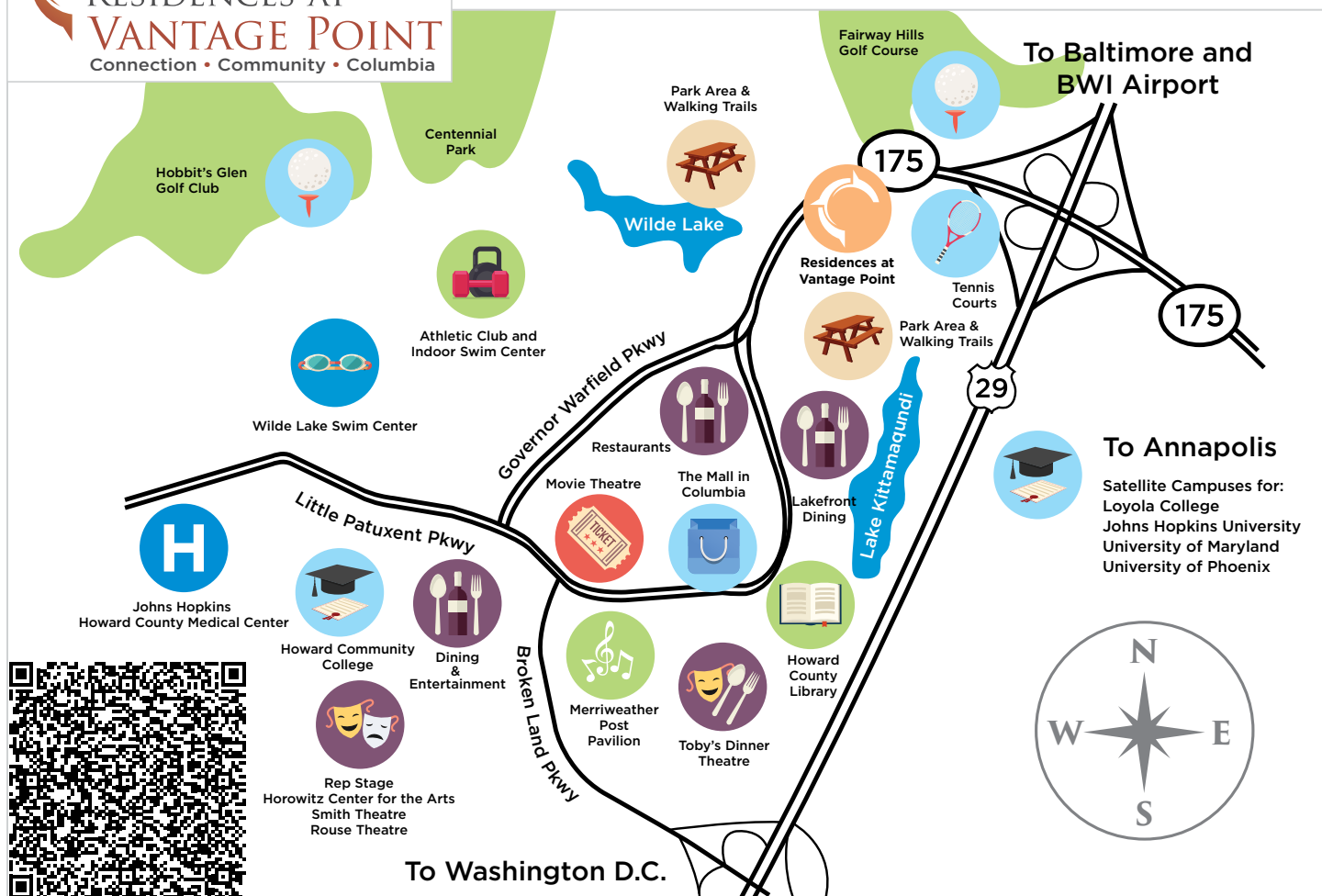
Connection • Community • Columbia

vantagepointresidences.org | (410) 992-1241
5400 Vantage Point Road, Columbia, MD 21044



Managed by Life Care Services™





From I-95

Take Rt. 175 West/Little Patuxent Pkwy. Pass Rt. 29, at 2nd light turn left onto Vantage Point Road. Take first right into the Vantage Point parking lot.

From Baltimore

Take Rt. 29 South to Exit 20B, Columbia Town Center, Rt. 175 West/Little Patuxent Pkwy. Turn left at 2nd light onto Vantage Point Road. Residences at Vantage Point is on your right.

From Washington

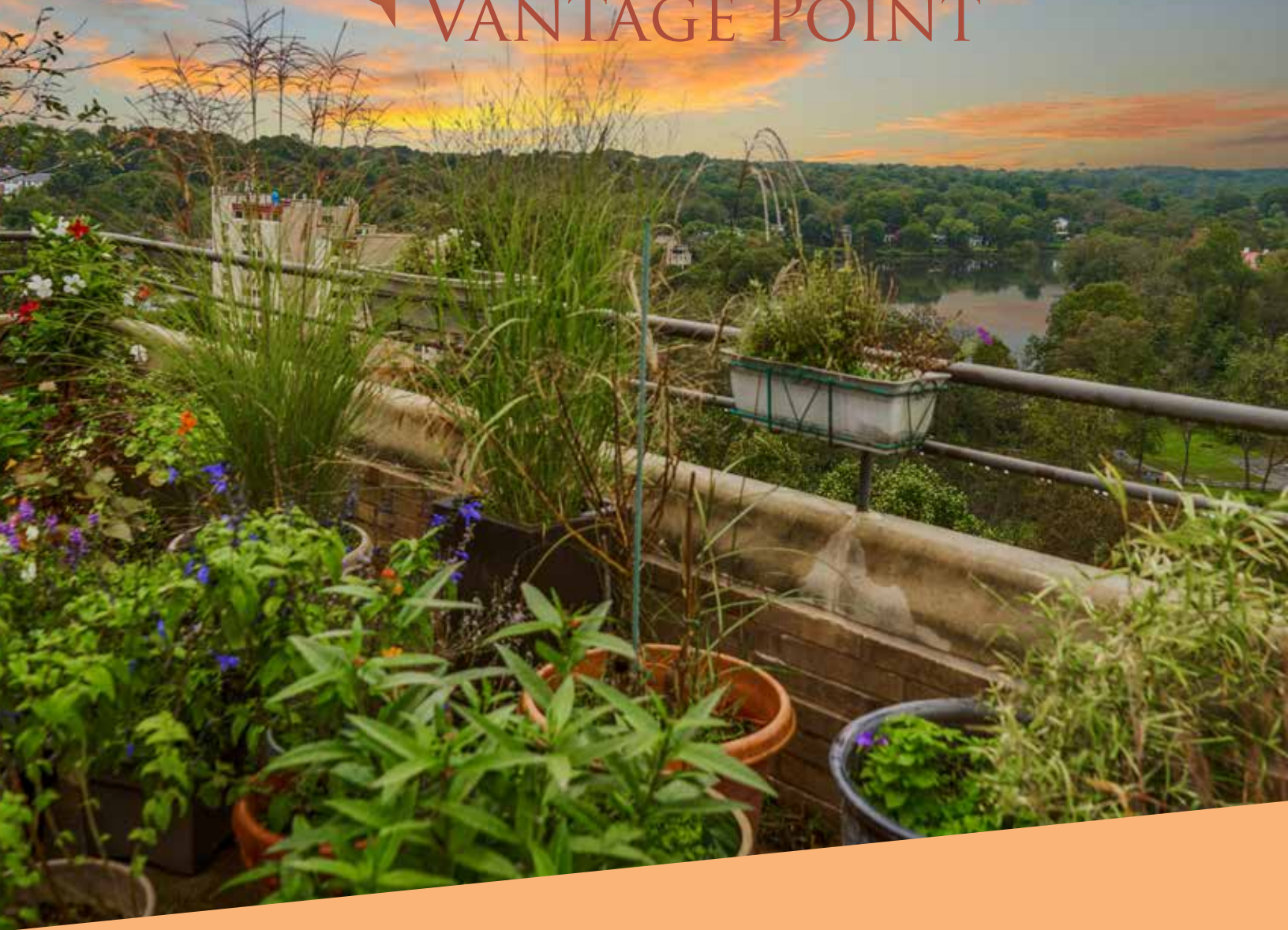
Take Rt. 29 North to Exit 20 B, Columbia Town Center, Rt. 175 West/Little Patuxent Pkwy. Turn left at 2nd light onto Vantage Point Road. Residences at Vantage Point is on your right.

From Annapolis

Take Rt. 97 North to Rt. 32 West toward Columbia. Take Rt. 29 North to Exit 20 B, Columbia Town Center, Rt. 175 West/Little Patuxent Pkwy. Turn left at 2nd light onto Vantage Point Road. Residences at Vantage Point is on your right.



RESIDENCES AT VANTAGE POINT



VANTAGE POINT SIGNATURE CLUB

**Membership Benefits and Steps to
Future Residency**

Signature Club

The *Signature Club* is the perfect way to experience the lifestyle available to you at Residences at Vantage Point and is a popular choice for individuals considering a future move.

There are two ways to experience the lifestyle at Vantage Point;

- The **Priority List** is a great way to start familiarizing yourself with our vibrant community.
- The **Wait List** allows a more immersive experience for Future Residents planning a move to the community.

The *Signature Club* is your opportunity to sample Columbia's most progressive senior living community from a very personal perspective. Call 410-992-1241 to schedule your Personalized Planning Meeting to become a member.

Join the Priority List

- Place a fully refundable deposit of \$1,000.00 for a single person or \$1,500.00 for two people to join the Priority List.

Membership Benefits:

- Invitations to select activities and social events hosted exclusively for *Signature Club* members.
- Enjoy one dining experience, every other month (6 per year), per member. *Excludes alcohol.*
- Invitations to attend informative seminars on topics such as how to pay for long-term care, preparing your home for sale, right sizing, and tips for planning a successful move.

Signature Club

Join the Wait List

In addition to the benefits of the Priority List, Wait List members enjoy the following additional benefits:

Membership Benefits:

- Place a fully refundable deposit equal to Ten Percent (10%) of the entrance fee for the style apartment(s) you are interested in to join the Wait List.
- Choice of available apartments based on your chronological position on the list.
- The Wait List Deposit Agreement locks in the Entrance Fee in effect when you join for twelve (12) months from the effective date.
- Enjoy one dining experience per month, per member. *Excludes alcohol.*
- Use of Vantage Point's Fitness Center with complimentary fitness center orientation by our Fitness Coordinator. *By appointment*
- Receive up to \$5,000 towards move coordination and moving expenses upon move-in.
- Housewarming party for up to six (6) of your friends in Vantage Point's Fireside or Private Dining Room to celebrate your move.*
- Access to Vantage Point's on-site Health Care Center for short-term rehab *prior to residency*, if needed.

Signature Club members must meet the age, health and financial conditions required for residency at Residences at Vantage Point at the time of application for residency. This membership is not a guarantee of residency at Residences at Vantage Point.

We look forward to having you join us in this special opportunity to learn more about the Residences at Vantage Point lifestyle!

Residences at Vantage Point considers all age and financially qualified applicants for admission without regard to race, color, ethnicity, religion, gender, disability, sexual orientation, gender expression, familial status, military service, or national origin.

* Subject to availability

FOUR STEPS TO RESIDENCY AT RESIDENCES AT VANTAGE POINT

Step One: Evaluate and Compare

- Schedule your Personalized Planning Meeting.
- Determine which Financial Option is your best choice.
- Select your apartment style.

Step Two: Join the Signature Club

- Review copies of the Residency Agreement, Disclosure Statement, and Resident Handbook.
- Select which level of Membership is right for you, Priority List or Wait List.
- Submit Application Forms and a non-refundable Application processing fee of \$175.00 per person.
- Submit a fully refundable deposit equal to 10% of the entrance fee to join the Wait List for a specific style apartment.
- Indicate the type of apartment residence you prefer.
- Enjoy your status as a Future Resident and take advantage of Special Membership Benefits at Residences at Vantage Point.

Step Three: The Apartment of Your Choice Has Become Available!

- Place a fully refundable Deposit equal to 10% of the Entrance Fee of your selected apartment home less your Signature Club Deposit.
- The 10% Deposit reserves your specific apartment home and locks in the current Entrance Fee for up to 90 days. This period allows you time to sell your current residence and prepare for your move.
- Submit updated Application Forms along with copies of your Medicare and Medical Insurance Cards (front & back).
- Schedule an Admissions Interview with Residences at Vantage Point staff.
- Select your personalized options for your new home.
- Set your Move-in Date.

Step Four: Pay the Balance of Your Entrance Fee and Receive the Keys to Your New Home!

- Sign the Residency Agreement.
- Pay the remaining Entrance Fee (less all previous deposits) and the first month's Monthly Fee.
- Receive the keys to your new home!
- Meet your new neighbors!

vantagepointresidences.org | 410.992.1241
5400 Vantage Point Road, Columbia, MD 21044



We hope you found this information valuable.

Contact us if you would like more details and to learn if Vantage Point is the right retirement living choice for you.

We are here to help.

Whether you would like to arrange a personal visit, or just need to have a few questions answered, we would love to hear from you.

You can give us a call at 410-438-8308 or contact us on-line at www.vantagepointresidences.org/contact/

vantagepointresidences.org | 410.992.1241
5400 Vantage Point Road, Columbia, MD 21044

Connection • Community • Columbia



Managed by  Life Care Services™



5400 VANTAGE POINT ROAD
COLUMBIA, MD 21044